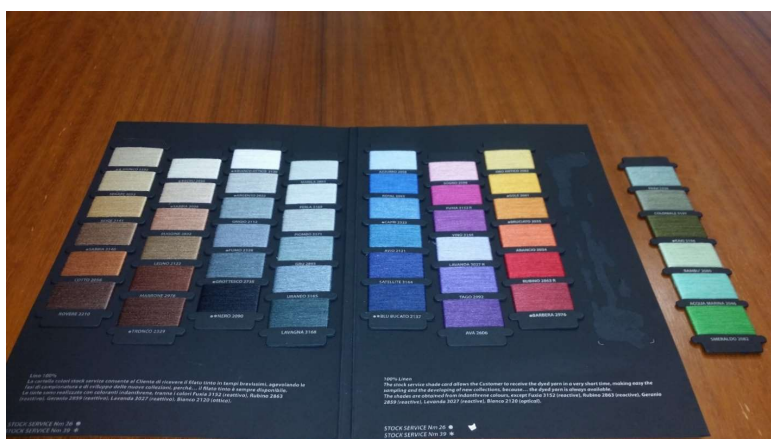


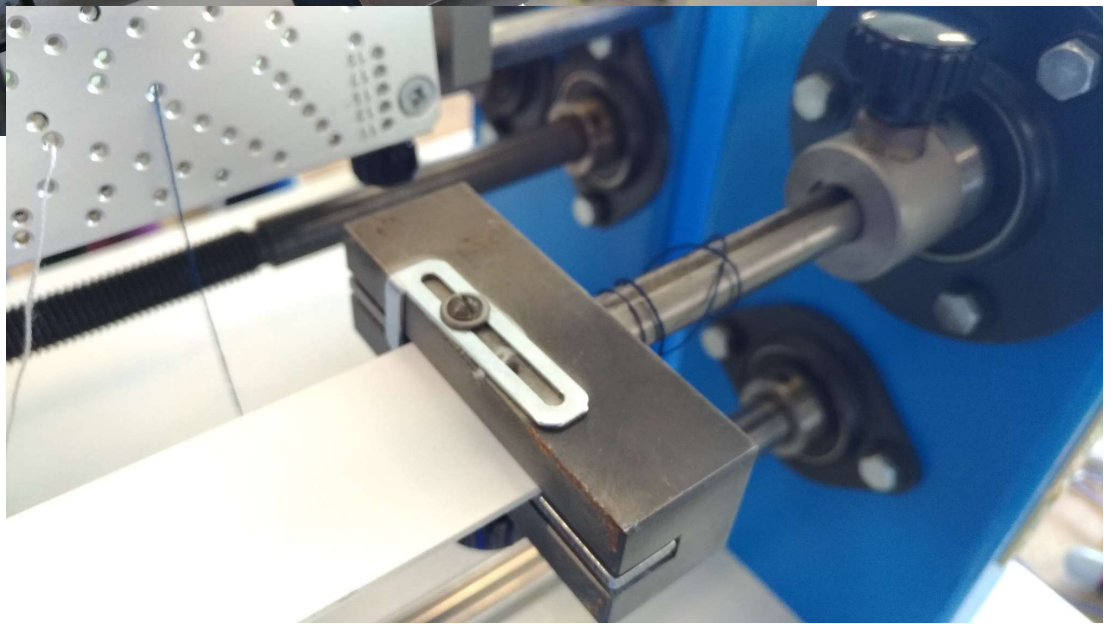
«SPECIAL» YARN SAMPLE WINDER code 171B



Special high accuracy model with micrometric winding feed.
Automatic forward-reverse movement, for winding on multiple layers.
Particularly suitable for medium-fine yarns.
For up to 12 different coloured yarns.
Very high winding speed (max 1000 turns/min).



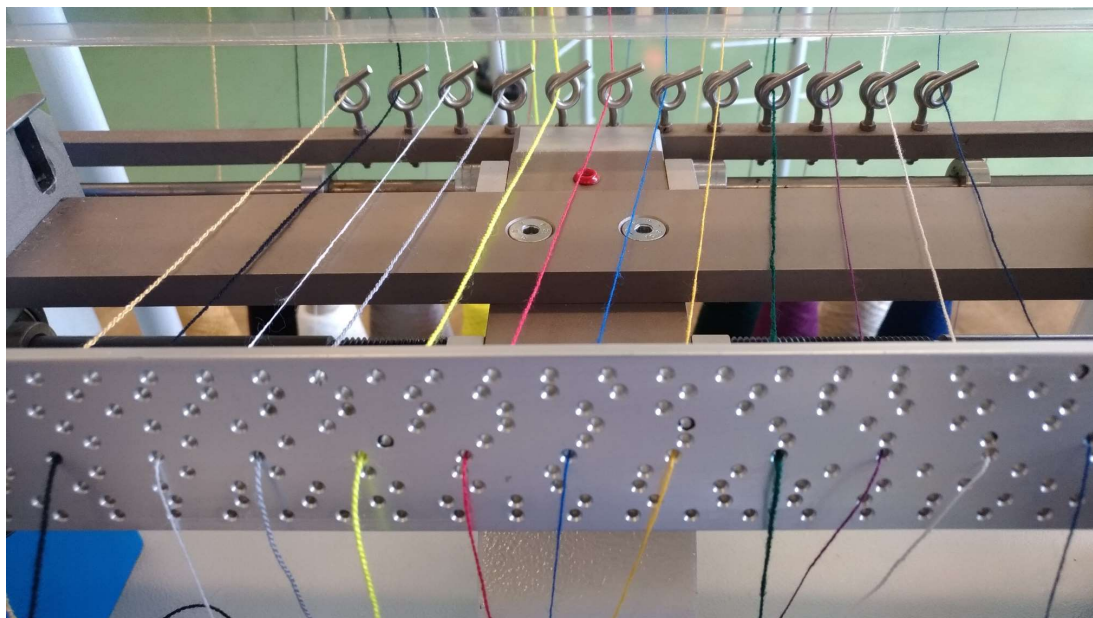
Fix the card into the rotating clamps.



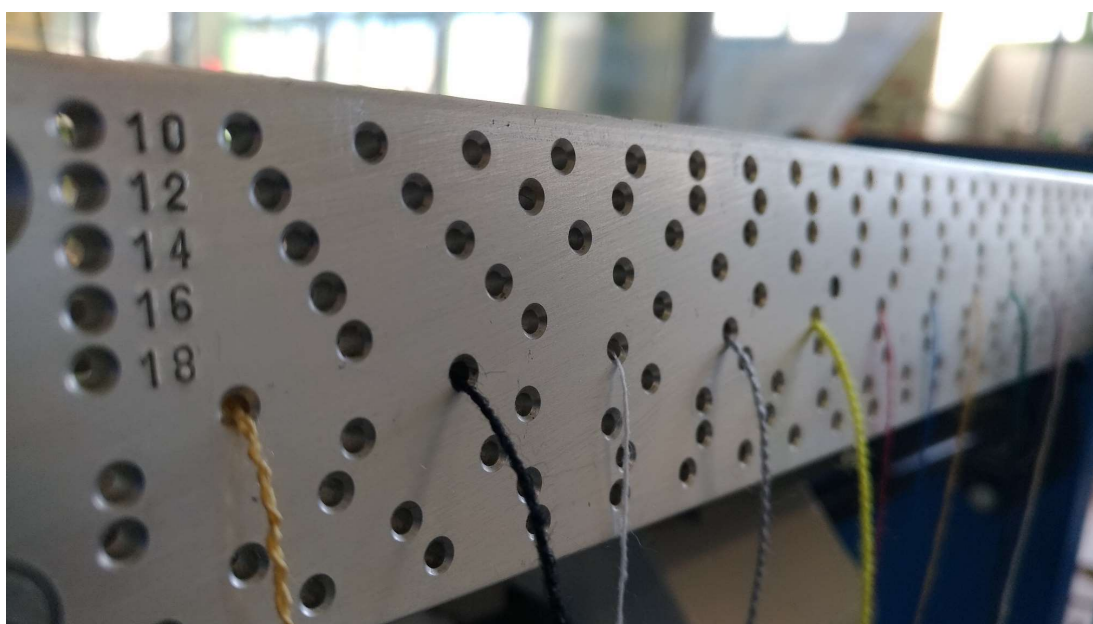
Prepare the yarn bobbins on the back side of the winder



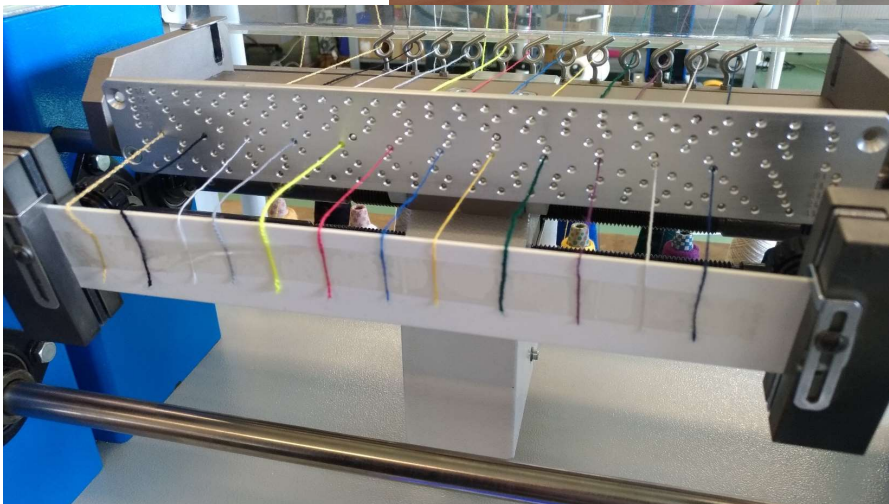
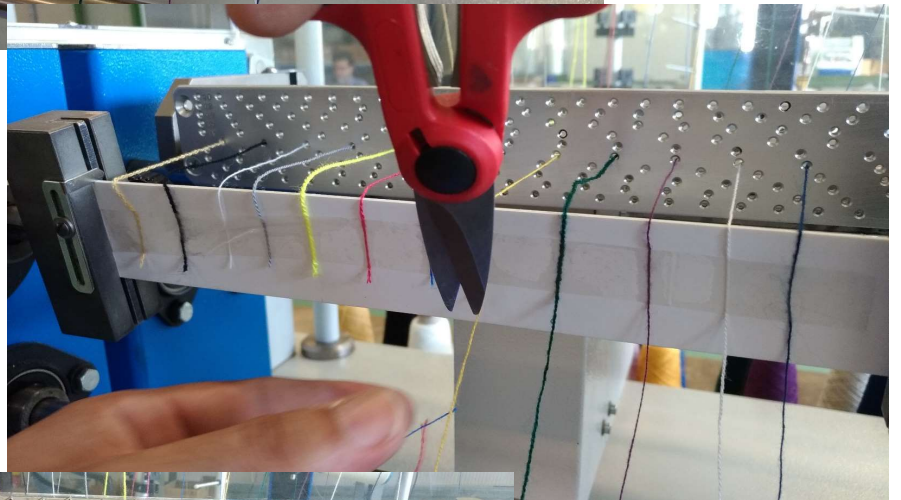
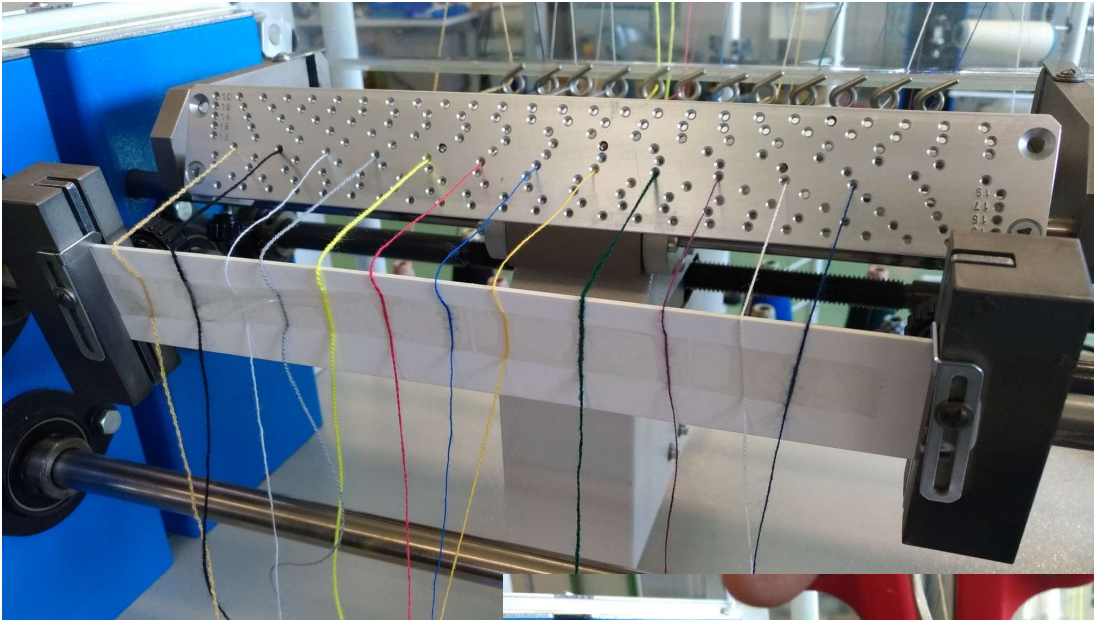
Have the yarns passing through the pig-tail guides and guide plate



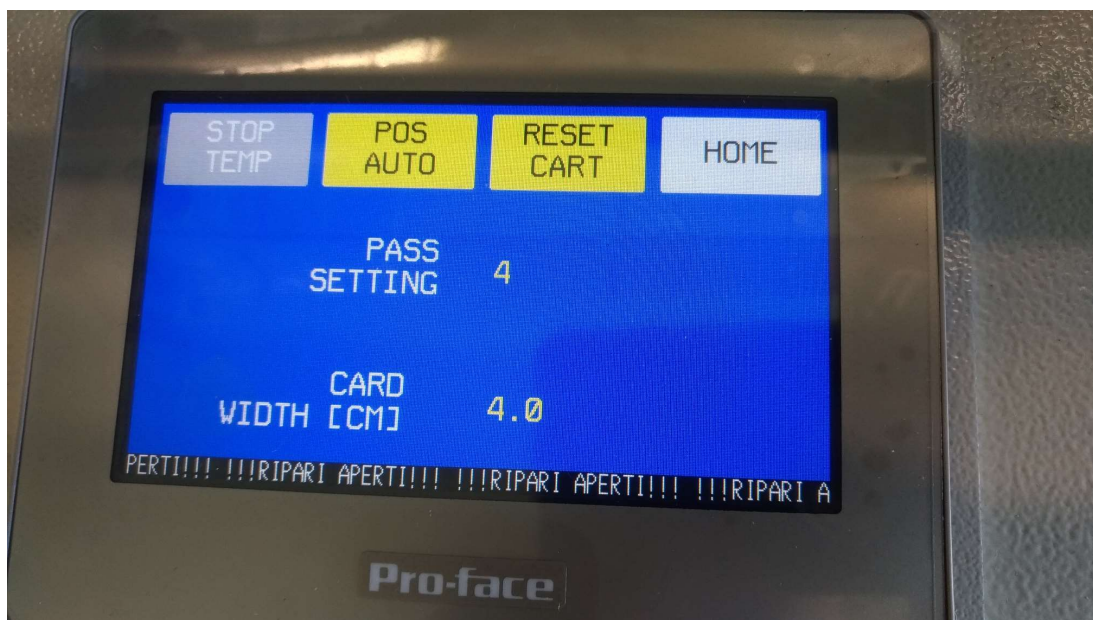
On the plate, chose the line of holes corresponding to the desired winding starting point of each yarn swatch.



Fix the yarns onto the card with adhesive tape or sticker or a small glue point and then cut the tails.



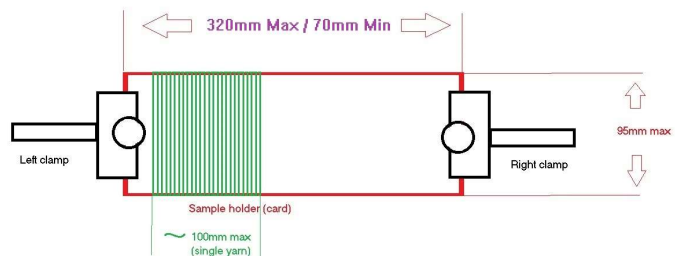
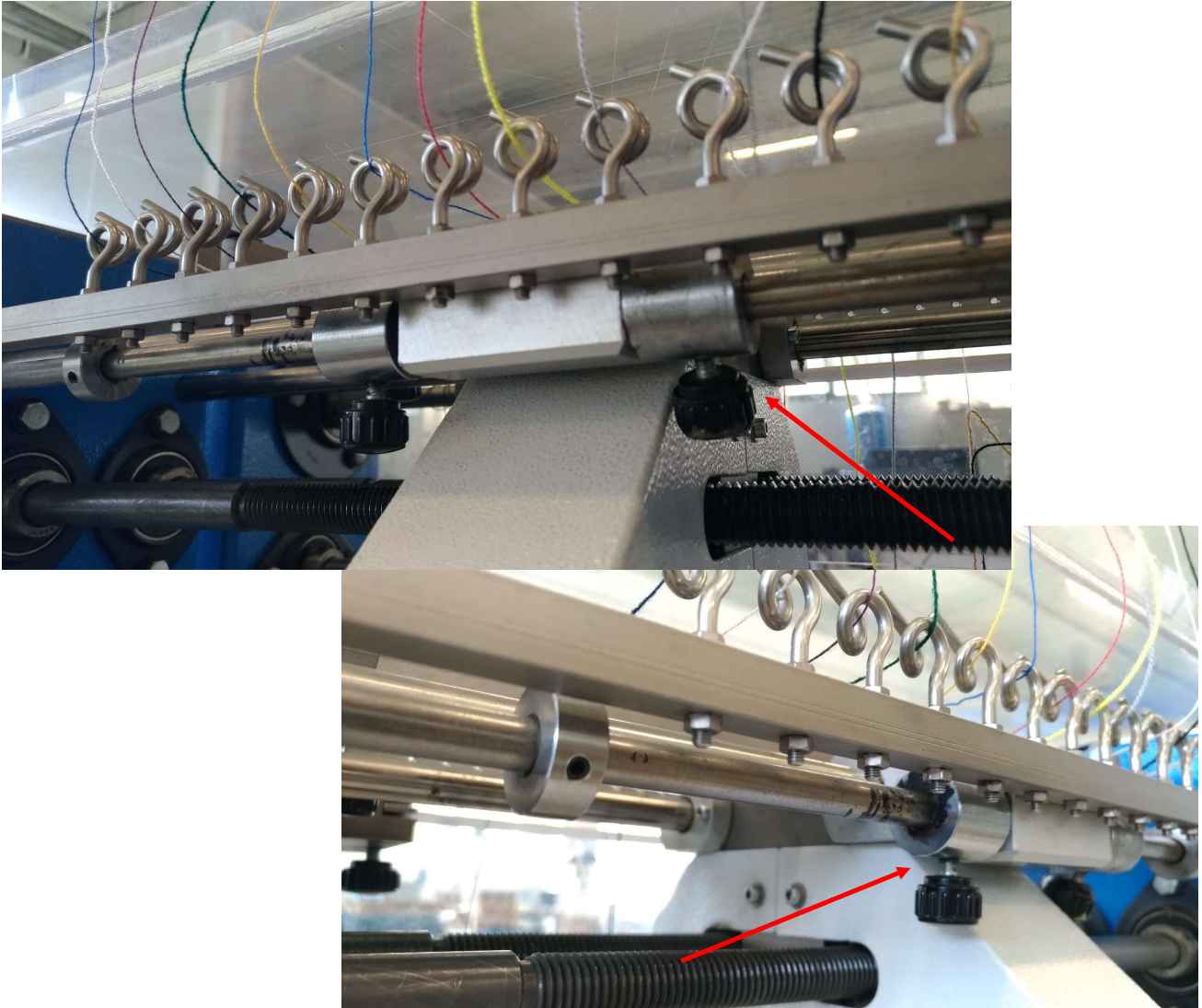
Set the number of yarn layers (pass) you wish to have on the card and the (vertical) width of the card. This figure will be used to calculate the length of the consumed yarn.



Set the turning speed.



On the back side of the machine it is possible to adjust the winding horizontal width, but moving the indicated stops.



Min/max dimensions of the card

Press start and in a few seconds the card will be done.
Fix the yarns with the tape and cut the tails.



The display will show the consumed yarn length.



For the best winding, use yarns of the same count.



Coloured test cards of different shapes and different dimesions can be produced, according to specific requirements.

